

# CHART SALE 2017

**Equilibrium: 03 9578 1229, [info@kinesiologysshop.com](mailto:info@kinesiologysshop.com)**

**Over time we accumulate damaged charts, sometimes second hand charts, charts we wish to clear or display stock no longer required**

**Postage varies from \$5 to \$9 depending on value of order which is based on original retail price. International Shipping please email us for quote.**

**Send no cheques! Please phone or email to see what is still available. Payments can be made by Credit Card, EFT or PayPal.**

*To view our full range of charts (non sale) got to our website link:  
<http://www.kinesiologysshop.com/eqcharts.html>  
 (plus hit the green arrow to scroll through the various pages)  
 Or if you live locally visit the shop: 523 North Rd Ormond.  
 10am- 5pm Mon-Fri, 10am - 2pm Saturdays*

## Did You Know?

Equilibrium has the largest range of Kinesiology & related charts in the world!

Perhaps right here on your doorstep (if you live in Australia and more specifically live in Melbourne).

BUT we have been sending charts all over the world since 1984 and in today's business distance matters even less !



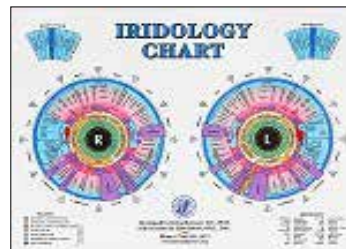
**1. Psycho-Aromatherapy Chart.** A2 wall chart. Sheened. Old classic from the UK, now unavailable. Was shop display.

**SOLD**

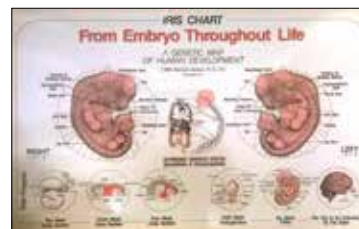
## Bernard Jensen International Iridology Charts



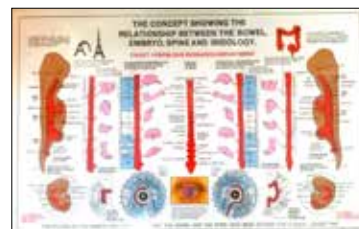
**5. Iridology and the Nervous System chart** from Bernard Jensen Iridology. 43 x 28 cm. Laminated. Map of iris and correlation to regions of spine with affects on body functions. **SOLD**



**6. Iridology and Nutrition chart** from Bernard Jensen Iridology. 43 x 28 cm. Laminated. Double sided chart of Iris Diagnosis and Nutrition for ailments on the reverse side. **Usual Price: \$33, Sale: \$19**



**7. The Iris and the Embryo chart** from Bernard Jensen Iridology. 43 x 28 cm. Laminated. The Development of the Embryo as it relates to the Iris Map **Usual Price: \$22, Sale: \$15**



**8. The Bowel, Embryo, Spine & Iridology chart** from Bernard Jensen Iridology. 54 x 35 cm. Sheened. Shows relationship of all three aspects against the iris. **Usual Price: \$22, Sale: \$15**



**9. Fundamental Iris Signs.** 25 x 50cm. Sheened. From Bernard Jensen Iridology. Double sided chart, sheened, trimmed hard & missing info at bottom. Grubby. Was shop display. **SOLD**

### 2. Colon Therapy Chart.

A2, sheened. Two colour only - red/black. Shows relationships of 71 parts of the body to the parts of the colon plus cell salts involved in balance As new. No Longer Available



**SOLD**



**3. Quest Chakra Chart.** 90 x 60cm, laminated. Damaged copies available but excellent condition. Fantastic large colourful chart. **Update: Damaged copies sold but limited sale offer of \$22 each on new copies (usually \$28)**



**4. Homeopathic First Aid** 60 X 42 cm. Laminated. Contains details of Homeopathic dosages & potencies, herbs & tinctures for shock, bruises, burns & scolds, breaks & strains, bites & stings and punctures. Also

contains information on rescue remedy and on the care of remedies.

**Usual Price \$19, Sale price \$11.** Overstocked

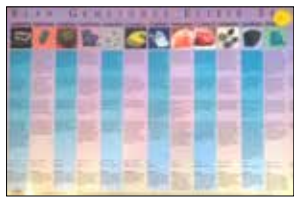


### 10. Allergies & Candida Chart.

92 x 59 cm. Sheened. The classic from HEBS (Steven Rochlitz a pioneer researcher in the Kinesiology field). Has been out of print and unavailable for over 15 years. Damaged, but rare & sought after. **SOLD**

### 11. Lymphatic Flow chart.

A2, laminated. As new. Flow indicated by arrows. **SOLD**



### 12. Gemstone & Elixir Chart.

42 x 30cm. Laminated. Pictures & Descriptions of 12 crystals. Was shop display. NLA \$5, but only available if purchasing other charts



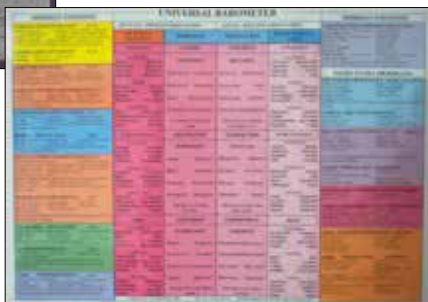
### 13. Periodic Table and Mineral Deficiencies Chart.

42 x 30cm. Doublesided. Last One. As New Sheened: \$5, but only available if purchasing other charts



### 14. Crystal & Gem Essences Chart. 60 x 85cm. Large & Laminated. 40 crystals and their descriptions. Large wall chart. Ex-display - has velcro dots on the back. **SOLD**

(usual \$28 copies freely available however)



### 15. Universal Barometer Wall Chart

The Universal Barometer from Neuro-Training, with emotions from the different kinesiology modalities linked together on the one chart. Laminated wall chart - 60 x 84 cm **Minor Damaged Copies: \$21 (usual \$28 copies freely available however)**



### 16. Skeletal Emotion Chakra Wall Chart A2 Size.

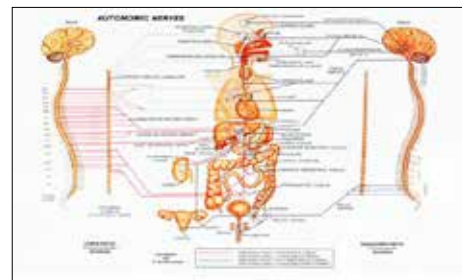
Colour coded chart that relates all the bones in the body to their chakras and lists the associated emotional descriptions. Also shows one how to use the chart and reference the emotions to muscles, ligaments, nerves, skin & tendons. An amazing chart with unique information. A must for Kinesiology work. 77 x 50cm,

Laminated. **SOLD** (usual \$28 copies freely available however)

### 17. Foot Reflexology Wall Chart A2 Size.

A classically presented colourful foot reflexology chart of the underside of both feet plus topside view and left and right side ankle zones. Laminated,

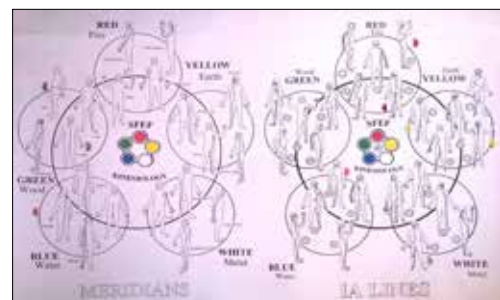
A2 sized wall chart. **SOLD** (usual \$25 copies freely available however)



### 18. Autonomic Nervous System Chart

from Bernard Jensen Iridology. 43 x 28 cm, laminated small wall chart or large desk chart showing nerve connections from the spinal cord to the various parts of the body. Grouped into sympathetic and parasympathetic nerves as well.

\$11 (usual \$22 copies freely available however)



### 19. SFEF Five Element Wall Chart

85 x 60cm. Laminated. One off. Shows 5E and Meridians & 5E and IA Lines **\$13**

### 20. Six Phase Table Chart.

A2 size, sheened. Second Hand. Best visit the shop if you can to see this one. Very Interesting.

**SOLD**



## Touch For Health Charts

### 21. TFH Reference Wall Chart.

A1 (100 x 70cm). Laminated. Previous Edition with minor damage, generally not noticeable. The most famous Kinesiology chart in the world.



Previous Edition, Damaged Price \$19  
(usual \$33 copies freely available however)

### 22. TFH 5 Element & Acupuncture Chart.

90 x 60cm. Laminated. Double Sided as pictured below. Minor damage, generally not noticeable. Several copies available.

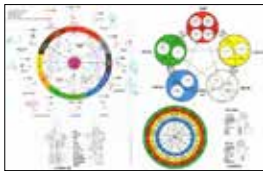
Damaged Price \$25  
(usual \$33 copies freely available however)



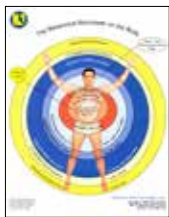
### 23. TFH Metaphors Chart.

Double sided. Sheened. Small Wall chart but can fold in half for desk size. Very minor damage. One only.

(usual \$25 copies freely available)



## Three In One Charts



A4 charts. Card only. Copies to clear. No Longer Available for public sale beyond that.

\$13 each

### 24. Barometer on The Body



### 25. The Six Elements

## Brain Gym Charts

### Brain Gym Activities for Children Chart.

Laminated. Minor Damage.

26. A2 size - \$19 (usual \$27 copies freely available however)

27. A1 size - \$29 (usual \$39 copies freely available however)



### Brain Gym Pace Charts

A2. Laminated. Minor Damage.

28. BG Pace For Children \$20  
(usual \$40 copies freely available however)

29. BG Pace For Adults \$20  
(usual \$40 copies freely available however)



### 30. Brain Gym Action Balance Wheel.

A1 Laminated. All new. (only useful to people who have completed the Brain Gym 101 course and understand the unique Brain Gym balancing process)

\$15 (usually \$35). Overstocked



### 31. Alphabet 8 Chart

Learners enjoy the physical (kinesthetic and tactile) experience of tracing the alphabet letters on this colourful and visually calming chart of the Alphabet 8s activity from Brain Gym.

Discover the alpha and beta letters. How do they feel alike? How do they feel different? Your students will soon be writing (and reading) with ease and confidence. Size 35 x 43 cm. Laminated.

Minimal Damaged price: \$19 (usually \$25).

## Applied Physiology Charts



### 32. Applied Physiology's 5 Houses of Chi

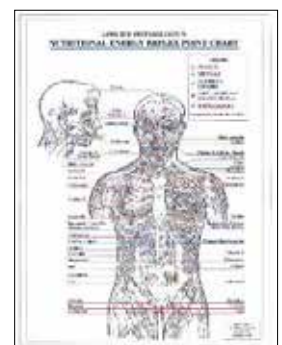
A3 laminated. As new. To Clear \$9 each

### 33. Nutritional Energy Reflex Point Chart.

A4. Laminated. Double sided.

Damaged Price: \$9

(Usual edition still available in A4 for \$13 each).

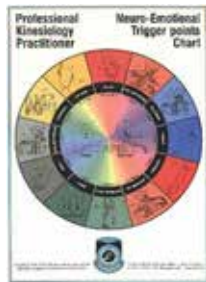


## PKP Charts



**34. PKP Five Element Emotion Wall Chart**  
A2. Laminated.  
Minimal Damage  
**\$27**  
(usual \$35 copies freely available however)

**35. PKP Neuro-Emotional Trigger Point Chart** A4.  
Normally a Double sided A4 chart with the Neuro-Emotional Trigger Points for each meridian on one side and the Meridian Emotions (5 for each meridian) on the other.



However these copies are not double sided but come as 2 x A4 charts in a plastic sleeve

**\$9 per set of 2**  
(usual \$15 copies freely available however)

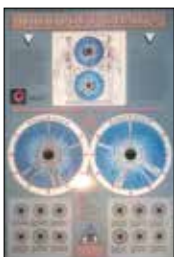
## DH wall charts

33 x 49 cm. Sheened.  
Many shop display with some fading, others brand new.

**Usual Price: \$11**  
**(MAY ONLY BE PURCHASED with other charts)**

Available in:

- |                                  |                                  |
|----------------------------------|----------------------------------|
| Damaged - \$3 each               | Brand New - \$6 each             |
| <b>36.</b> Advanced Aromatherapy | <b>40.</b> Advanced Aromatherapy |
| <b>37.</b> Essential Oils        | <b>41.</b> Essential Oils        |
| <b>38.</b> Iridology             | <b>42.</b> Iridology             |
| <b>39.</b> Yoga                  | <b>43.</b> Yoga                  |
|                                  | <b>44.</b> I Ching               |
|                                  | <b>45.</b> Handwriting           |

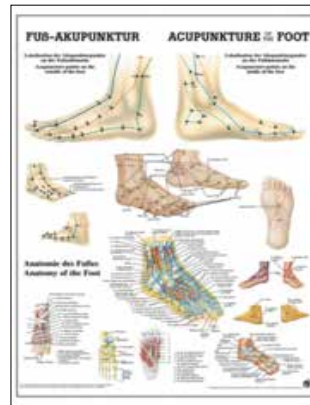


**Iridology:** Legend of both eyes, plus markings & discolorations to look for.

**Yoga:** 36 postures. Rare kind of chart

**Essential Oils:** 26 oils with pictures, descriptions properties, uses

**(MAY ONLY BE PURCHASED with other charts)**

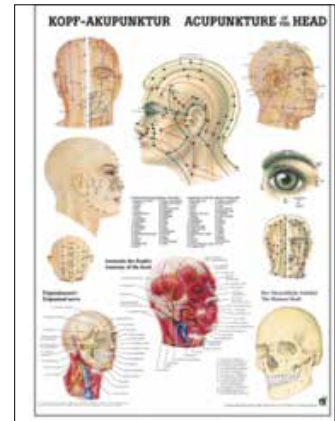


**46. Acupuncture of the Foot.**  
Laminated. 70 x 50cm.  
Shows all of the following as close ups in the foot region: meridians, acupuncture points, muscles, bones, veins, arteries. Colourful clear chart. Brand New.

**Usual Price: \$33, Sale: \$22 each**

**47. Acupuncture of the Head.**  
Laminated. 70 x 50cm.  
Shows all of the following as close ups of the head region: meridians, acupuncture points, muscles, bones, veins, arteries. Colourful clear chart. Brand New.

**Usual Price: \$33, Sale: \$22 each**



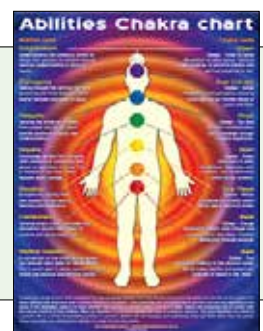
## 48. Astrological Moon Planting Guide 2017

75 x 60cm.  
Brand New to clear  
Laminated ONLY:  
**\$9 (were \$16)**



**49. Abilities Chakra Chart.**  
A2, laminated.  
Colourful chakra chart with descriptions.  
Was shop display.  
No Longer Available.

**SOLD**



**50. Ear Reflex Chart.**  
60 x 95cm. Colourful.  
Gloss Sheened.  
Damaged around edges.  
Rare one off chart.

**Sell: \$15**

## Anatomical Charts & Chart Books

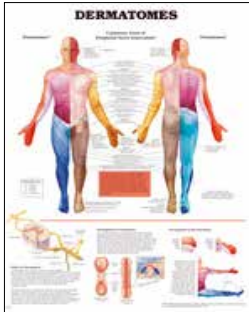
### Anatomical Chart Company Series

Wall charts. 50 x 65 cm. Laminated.

Some damaged, some to clear.

Usual Price: \$31, Sale price: as indicated

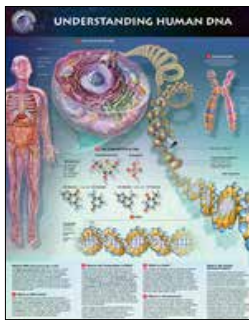
**AS NEW** (1-3 copies of each to clear - overstocked):



**51. Dermatomes**  
\$19



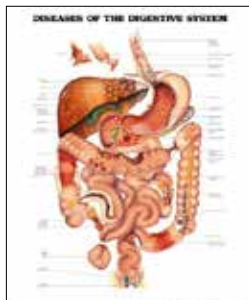
**54. Pregnancy & Birth** \$15



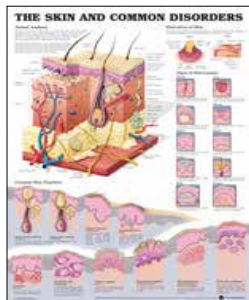
**52. Understanding Human DNA** \$19



**55. TMJ** \$22



**53. Diseases of the Digestive System** \$11



**56. The Skin & Common Disorders** \$15

### **57. The Human Skeleton**

Large, laminated  
1m x 60cm chart from  
Germany  
(The Rudiger Series).

Minor Damaged Price:

**SOLD**

(usual \$35 copies freely  
available however)



### **DAMAGED**

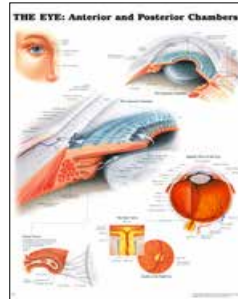
(usual copies also available for \$31 each)



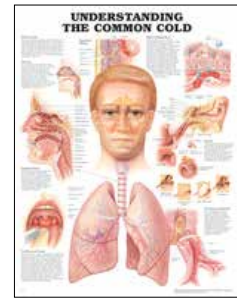
**58. The Skeletal System** \$15



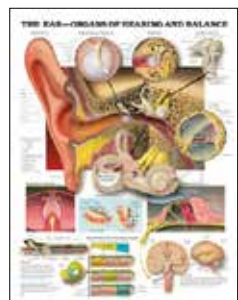
**61. The Ear**  
\$15



**59. The Eye: Anterior and Posterior Chambers**  
**SOLD**



**62. Understanding the Common Cold:**  
\$5



**60. Human Ear**



**63. Dermatomes:** \$15

**Also in desk size 29 x 37cm.  
Inflexible hard laminate.**



**64. Human Hair** (\$5)

**65. Understanding Cholesterol** (\$5)



### **66. Portfolio of Human Anatomy**

Large Spiral Bound Folio of 30 Anatomical charts from Scientific Publishing. 32 x 39cm. Laminated cover. Charts printed on sturdy card.

Super large folio of 30 colourful charts (contact us for a list of contents).

All brand new.

Usual Price: \$49, Sale: \$33

